

THE BASKETBALL COURT

A basketball court has symmetry; one half of the court is a mirror image of the other. Thinking of the entire court as two half-courts, divide it into frontcourt and backcourt. The frontcourt is the half of the court where the offense's basket is located. The backcourt is the other half. Thus one team's backcourt is the other team's frontcourt.

Our diagram below shows the different areas of the court and notes the "basics" that every youth basketball coach and players should be familiar with.

COURT DIMENSIONS

Length of a Basketball Court:

94 feet (1128 inches) *Note: Many high school courts are 84 feet.*

Width of a Basketball Court:

50 feet (600 inches)

Size of a Basketball Backboard:

Width: 6 feet (72 inches)
Height: 3.5 feet (42 inches)

Size of a Basketball Rim:

The diameter of the rim is 18 inches
The top of the rim should be exactly 10 feet (120 inches) off the ground

Distance from the Free Throw Line to the Backboard:

15 feet (180 inches) from the backboard

Size of the Key:

19 feet (228 inches) from the baseline to the free throw line
12 feet (144 inches) in width, across the lane

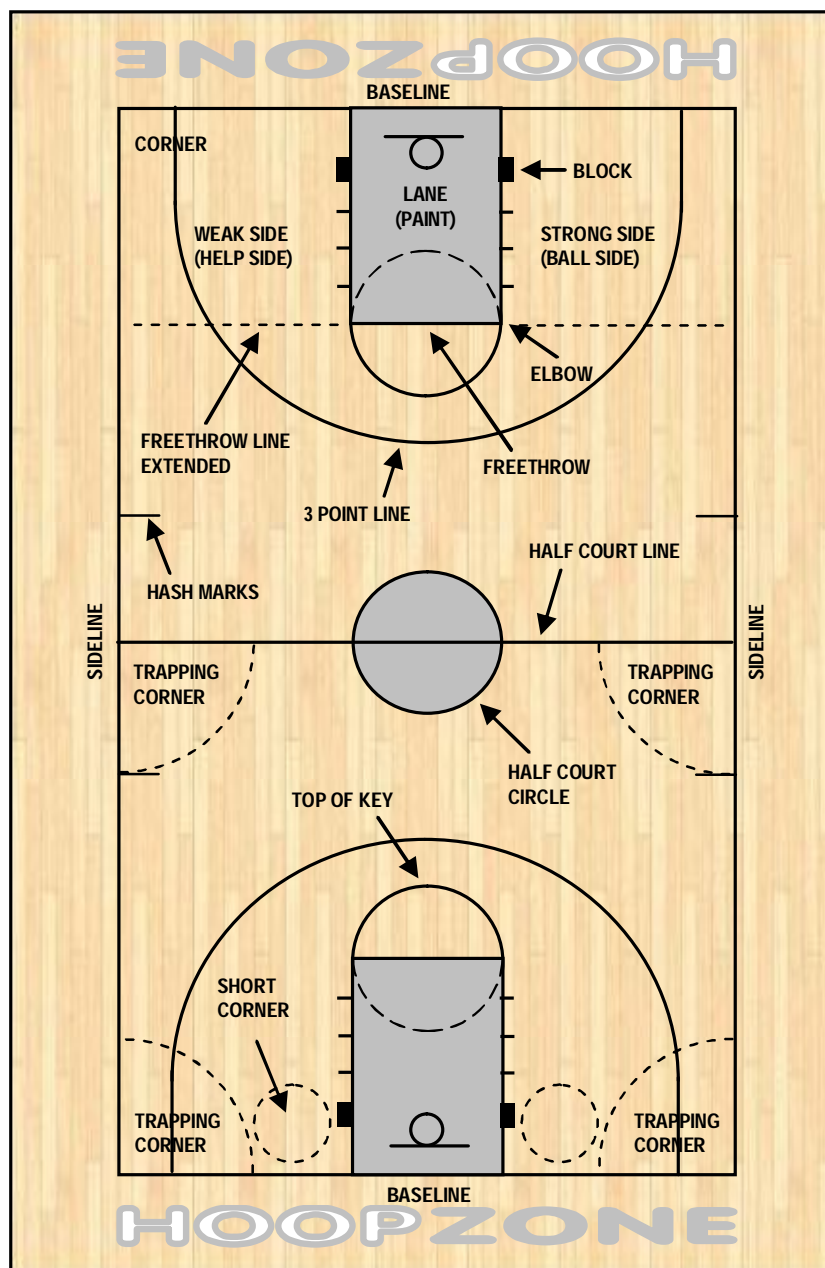
The 3 point line:

The college and high school 3 point arc is 19 feet 9 inches (237 inches).

The NBA distance is 23 feet, 9 inches, (285 inches). However, on the baselines, the NBA distance is 22 feet (264 inches).

The Circle above the Key:

The radius of the half circle above the key is 6 feet (72 inches). The diameter is equal to the width of the key.



Visit our online store at www.hoopzonebasketball.com/store
full of motivational artwork, eBook, balls, HZ apparel, window decals and more!